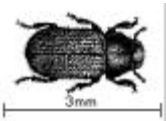
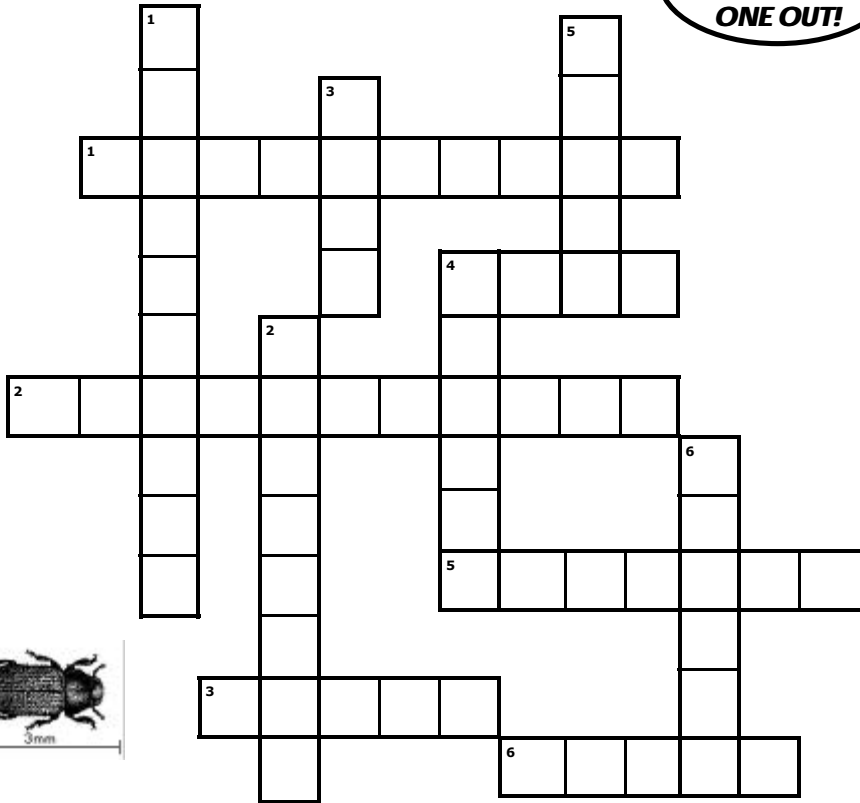


To do this activity, you will first have to print this page.

Crossword Challenge

HEY KIDS—
TRY THIS
ONE OUT!



Down:

1. DED is spread by the native elm b__ b_____.
2. It is illegal to store, use or transport elm f_____.
3. Leaves on an infected tree will w____, turn yellow, then curl and turn brown.
4. DED is caused by a f_____.
5. American elms provide s____, windbreaks, shelter for wildlife and oxygen.
6. In 1944 DED was first discovered in Canada in the province of Q_____.

Across:

1. In Saskatchewan there is a p_____ b__ between April 13th and July 31st.
2. The A_____ e__ is the main tree affected by DED.
3. DED can also spread from tree to tree through tree r_____.
4. The native elm bark beetle will f___ on the bark of healthy elms.
5. If you see the symptoms of DED call 1-800-S_____.
6. This disease is called D_____ elm disease because it was first identified in the Netherlands (where Dutch people live).



Saskatchewan
Dutch Elm
Disease
Association